



ANTONINI
NAVI



FULVIO DE SIMONI
YACHT DESIGN



UNDER CONSTRUCTION IN SPEC

UP-40 ISLAND

UP-40 ISLAND

CONCEPT



UP 40 - ISLAND is a contemporary motoryacht whose design has been studied in order to obtain an owner's suite in the Upper Deck that is unique in its kind and in its dimensions, with the aim of creating a unit whose functional design can enhance its shape.



UP-40 CONCEPT UTILITY PLATFORMS

“Utility Platform” is the first pre-compartmented modular platform for the construction of steel superyachts.

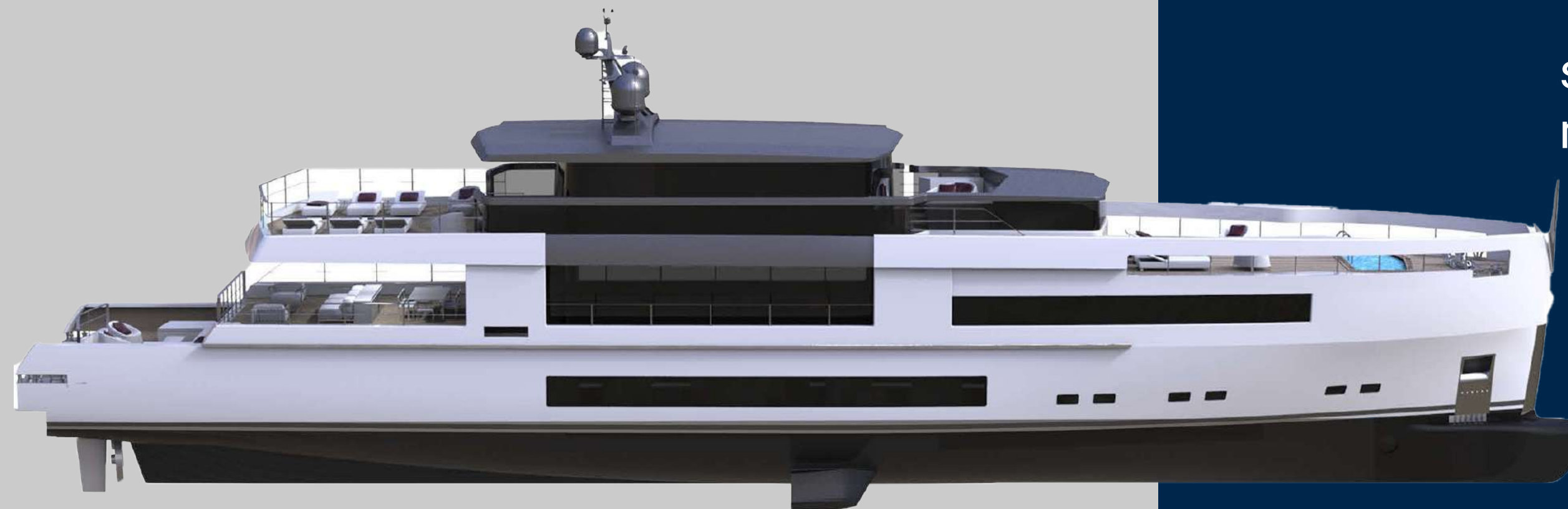


SLOT AVAILABLE: 2026

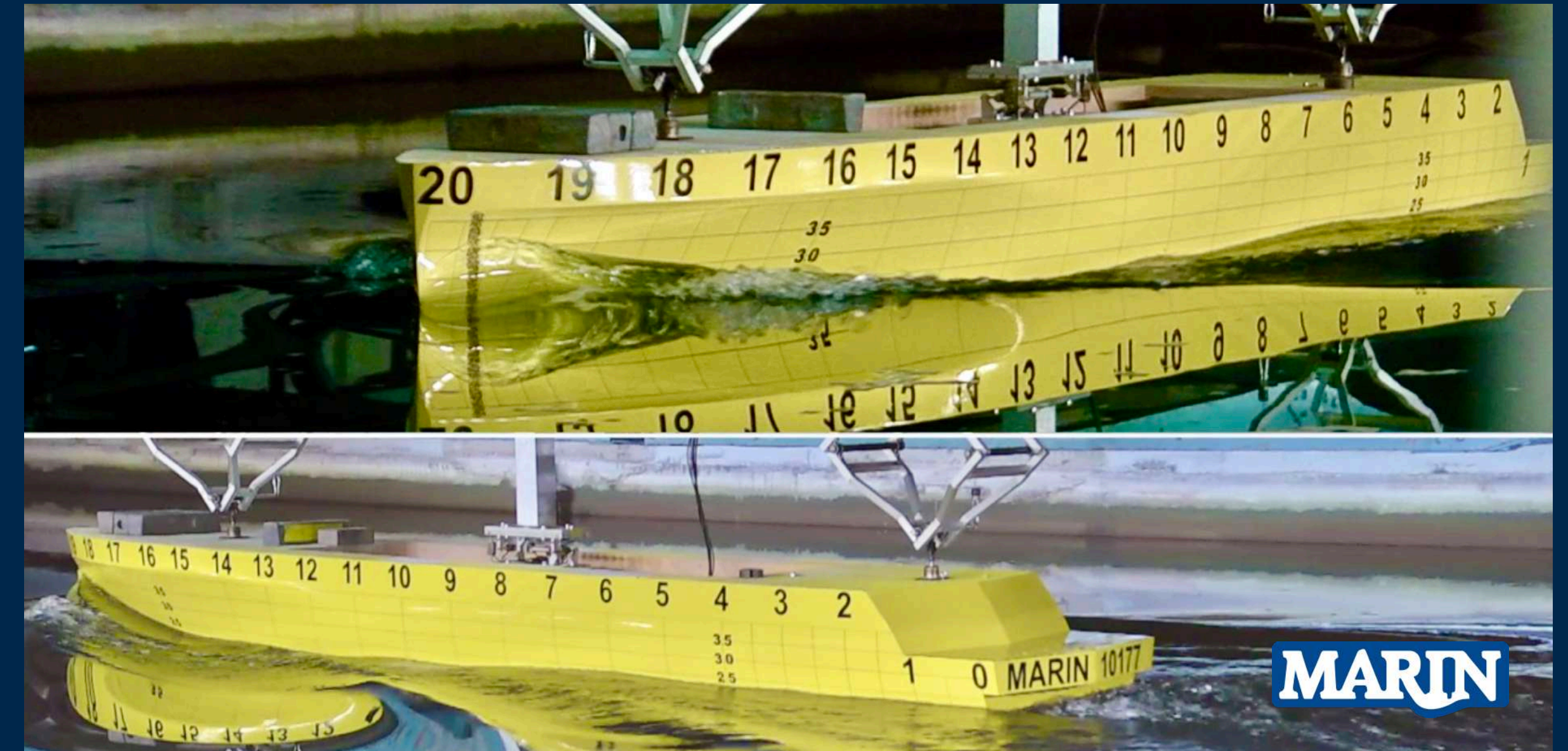


YACHT DESIGNER
FULVIO DE SIMONI

Fulvio de Simoni initiated his career in the 1970s. Known for his multifaceted, innovative, and non-conformist design approach, he collaborated with shipyards globally and contributed to the construction of over three thousand boats, earning numerous awards.



FULVIO DE SIMONI
YACHT DESIGN



The hull, hull lines, and appendages underwent static and dynamic testing at the MARIN Maritime Research Institute in the Netherlands.



UP-40 ISLAND
STRENGTHS

BEACH PLATFORM
100m²

PRIVATE OWNER TERRACE

POOL AREA
4m²

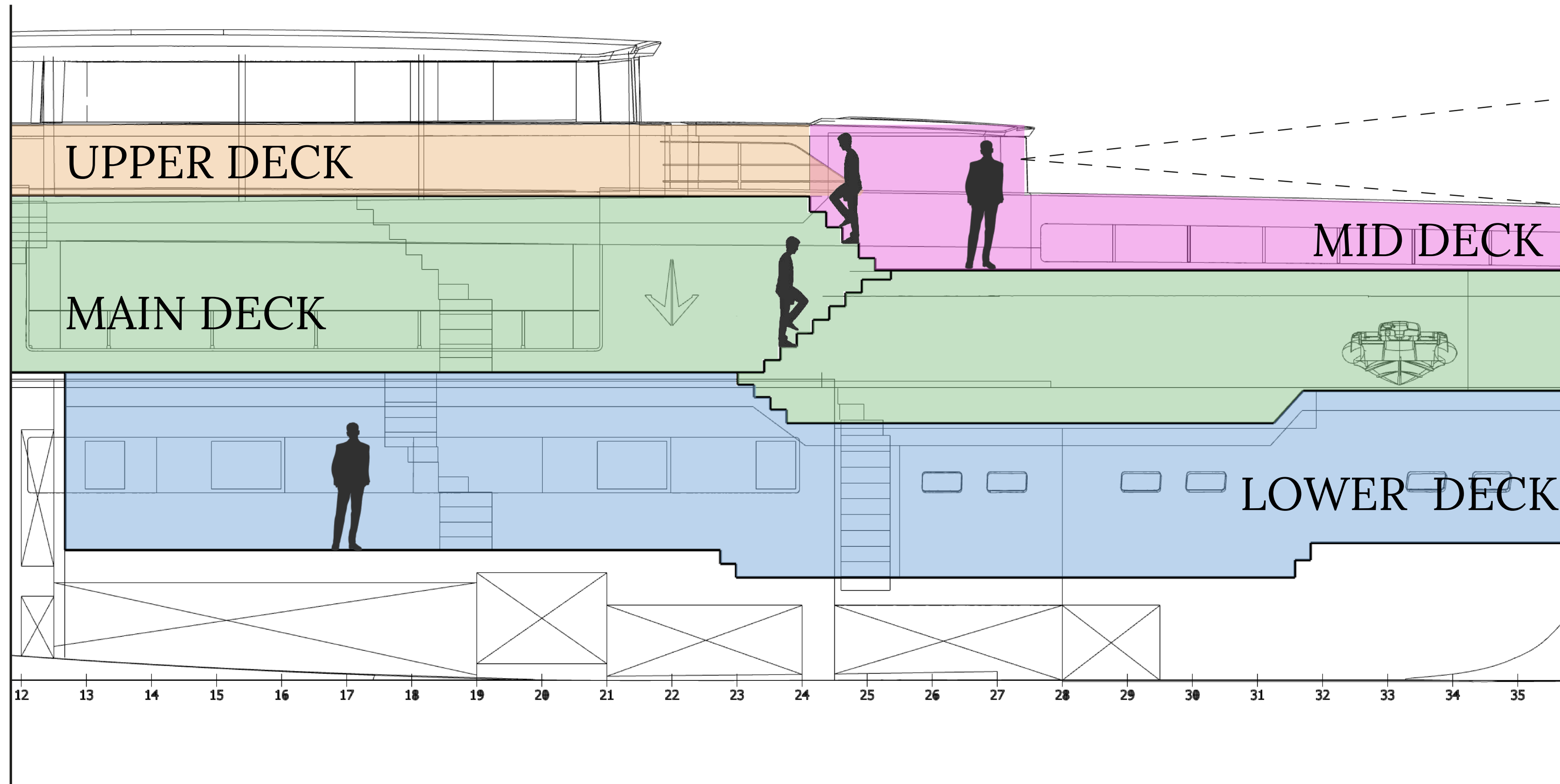
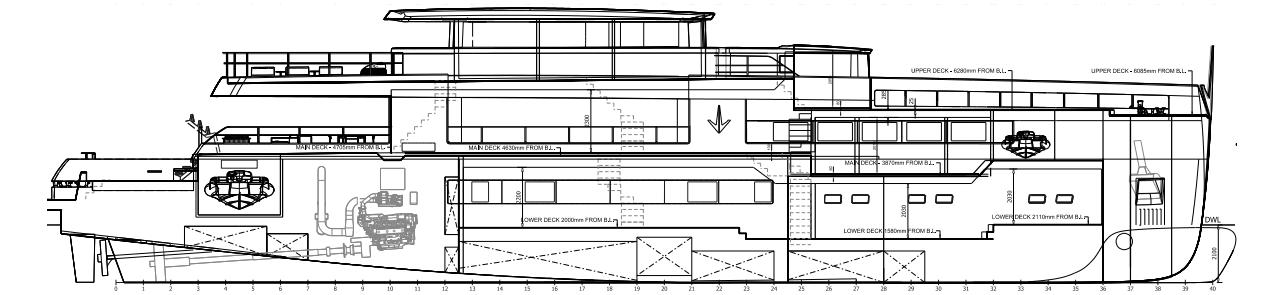
TENDER GARAGE

WHEELHOUSE
19 m²



UP-40 ISLAND

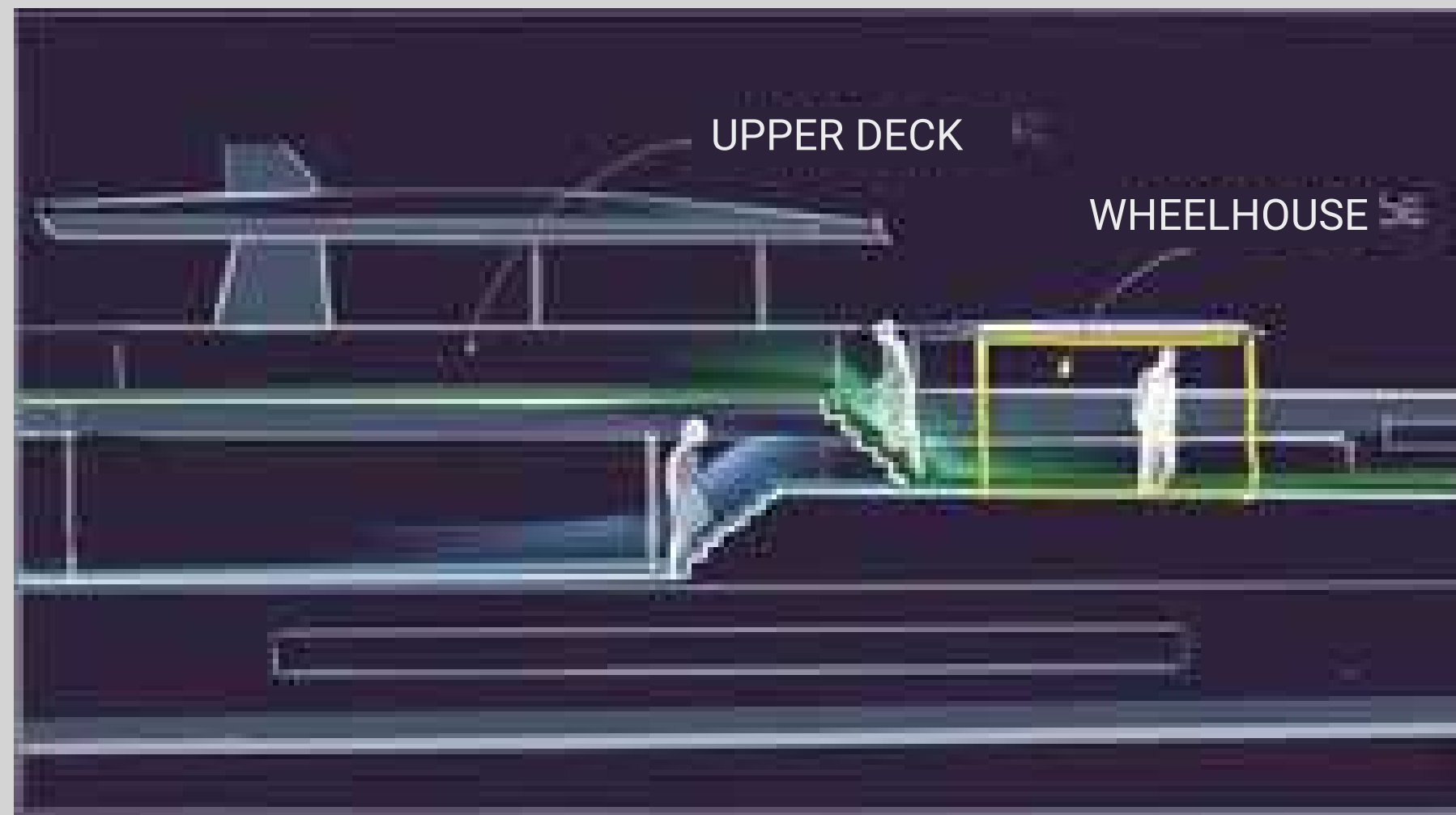
DECKS VOLUMES



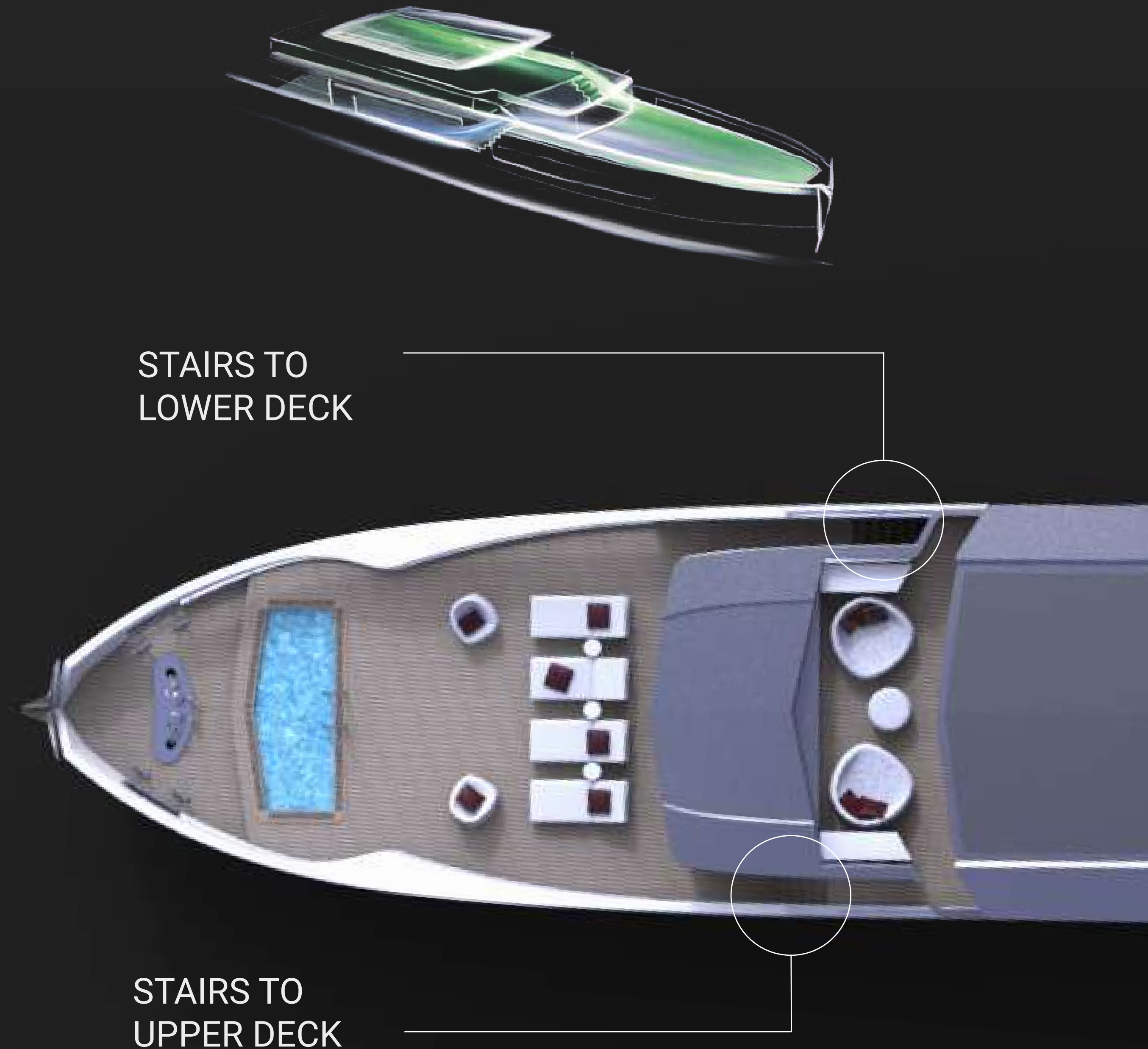
UP-40 ISLAND

DECKS CONNECTION

From the Main Deck it is possible to reach the Forward Deck along the starboard side of the boat. Conversely, the Forward Deck is directly connected with the Upper Deck or private access to the Owner's area.



2 LINEAR DECKS CONNECTED BY A MID-DECK WHEELHOUSE



POOL

pool in the bow area, creating a full-fledged solarium that is pleasantly airy both at anchor and when cruising and directly connected via an asymmetric staircase to the shipowner's area on the upper deck



BEACH PLATFORM

77 m2



TERRACE

private Owner terrace



COMMON AREAS

3 different areas dedicated to
lunch/dinner



OWNER'S SUITE

the owner's suite can have a surface area of over 85 square meters and a private terrace



UP-40 ISLAND

TECHNICAL SPECIFICATION

MATERIALS

Hull: Steel

Superstructure: Aluminium

DIMENSIONS

Length over all (LOA): 43.0 m

Maximum beam: 8.5 m

Depth, amidship:..... 4.4 m

Draught, full load under the keel: 2.2 m

GROSS TONNAGE: <500 GT

CAPACITIES

Fuel: 48.000 Its

FreshWater: 9.000 Its

Black Water: 5.800 Its

Bilge: 2.200 Its

Pool: 3.500 Its

PERFORMANCE

Cruising speed: 16 kts

Max Speed: 16.0 kts

Range @10 kts:..... 4.000 nm

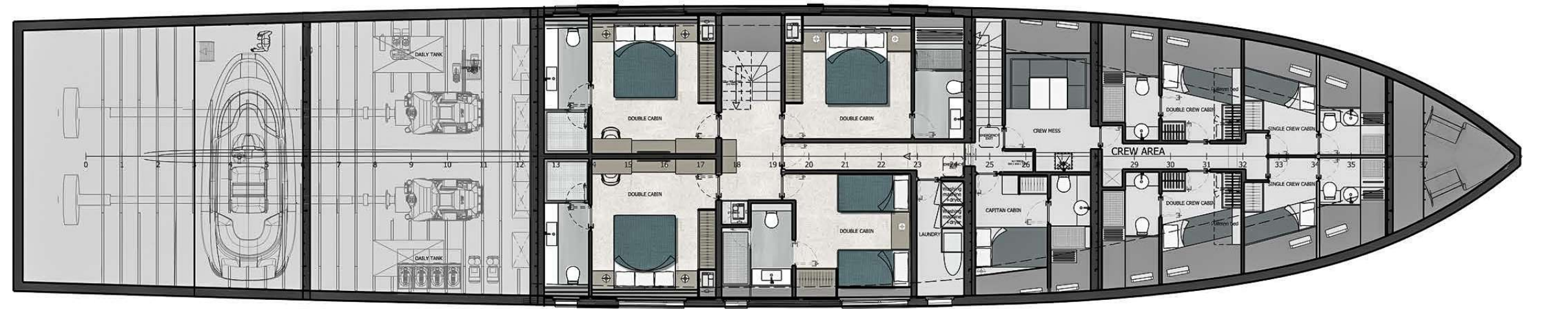
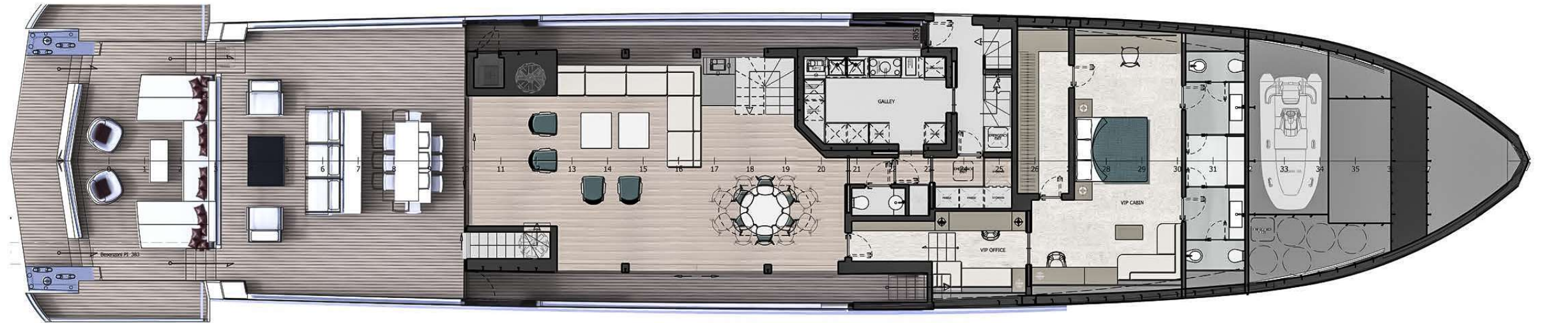
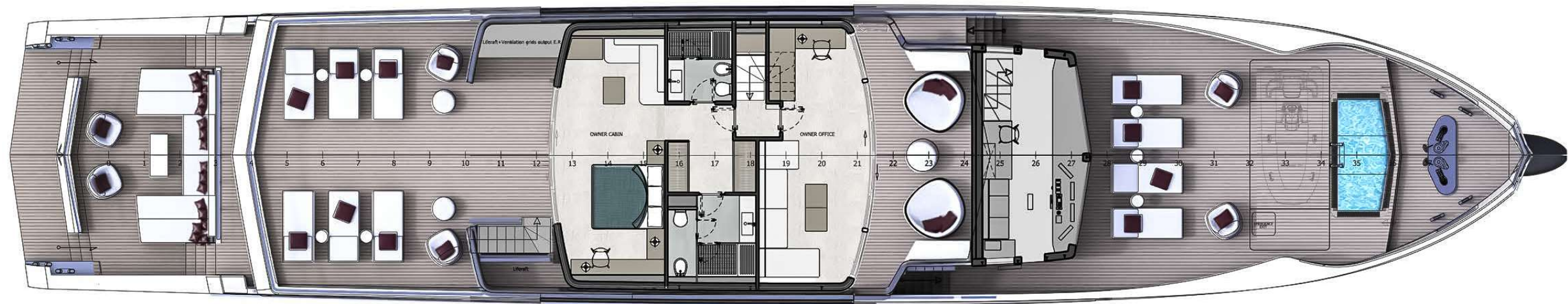
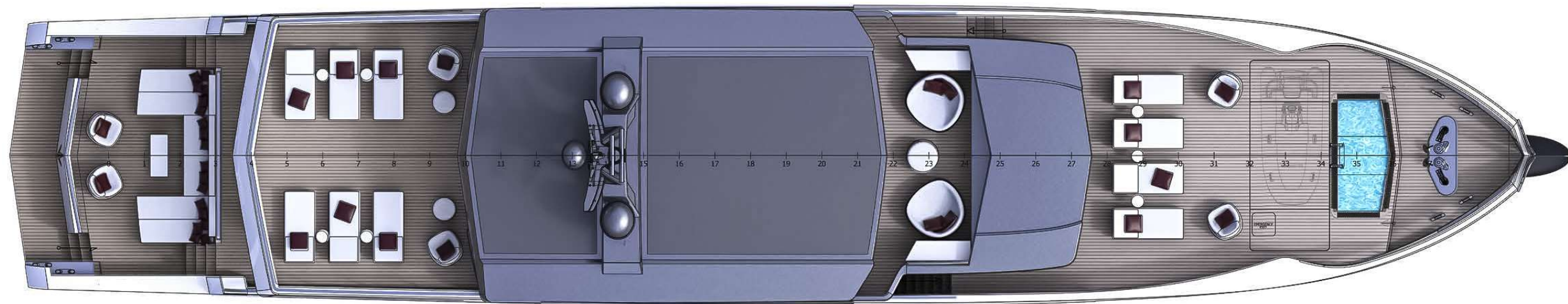
ENGINES std PROPULSION:..... 2xMAN 1029 kW

ACCOMMODATION

Passengers: 12p - 6 Cabins

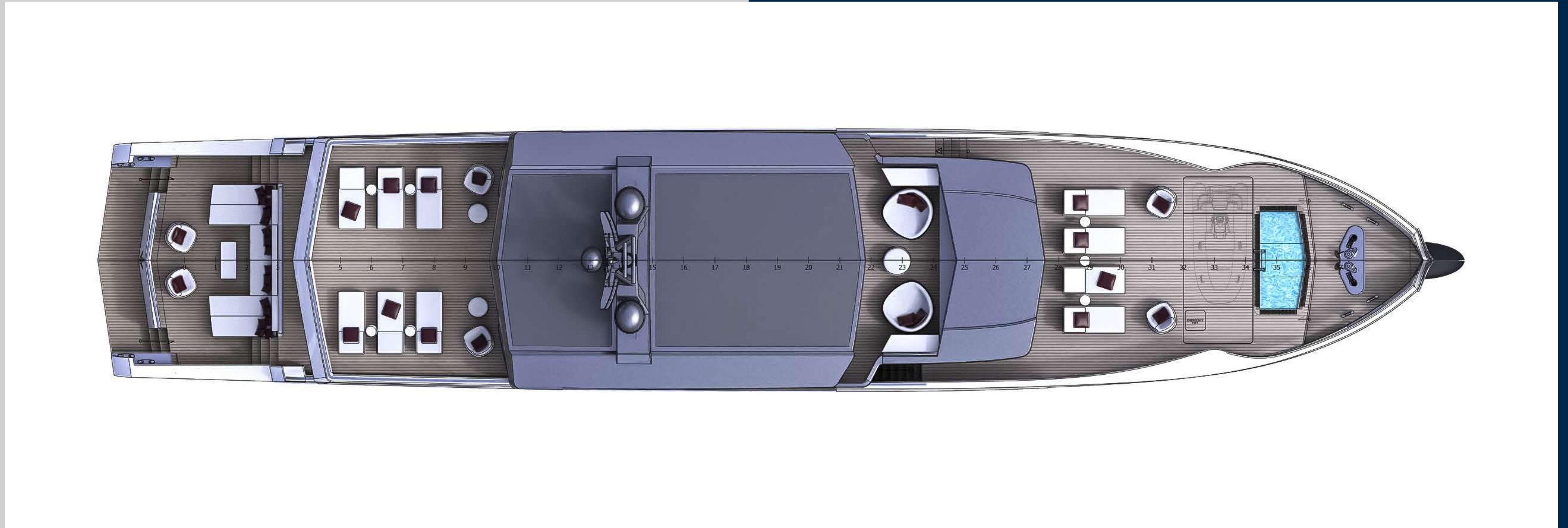
Crew: 7+1p - 5 Cabins

UP-40 ISLAND
**GENERAL
ARRANGEMENT**



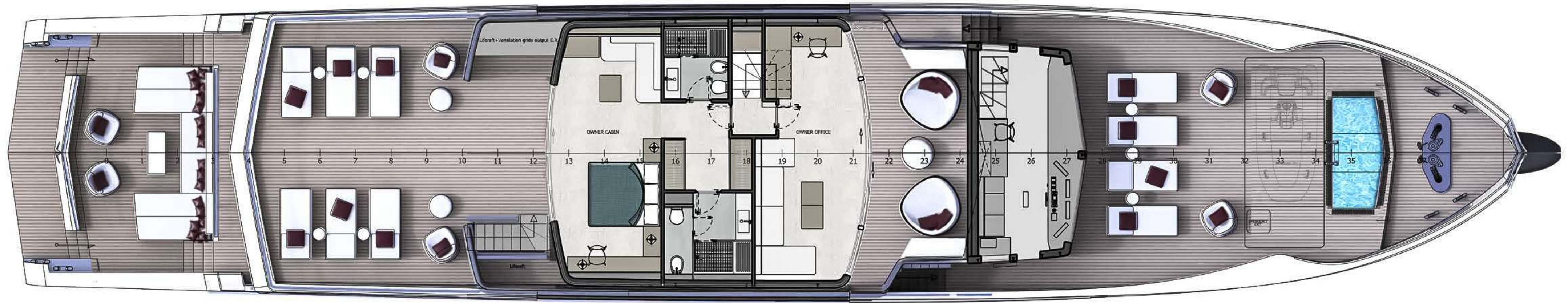
UP-40 ISLAND

SUN DECK | BRIDGE DECK

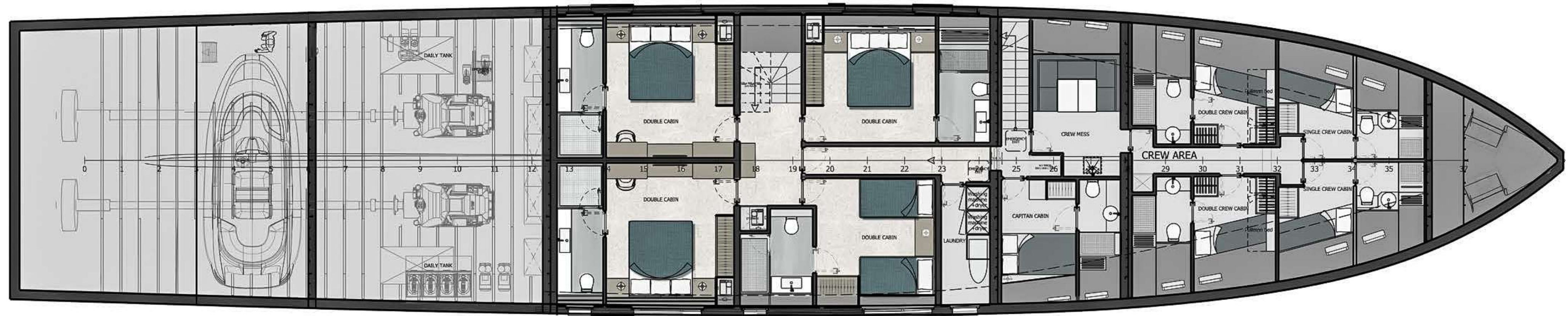


UP-40 ISLAND

UPPER DECK



UP-40 ISLAND LOWER DECK

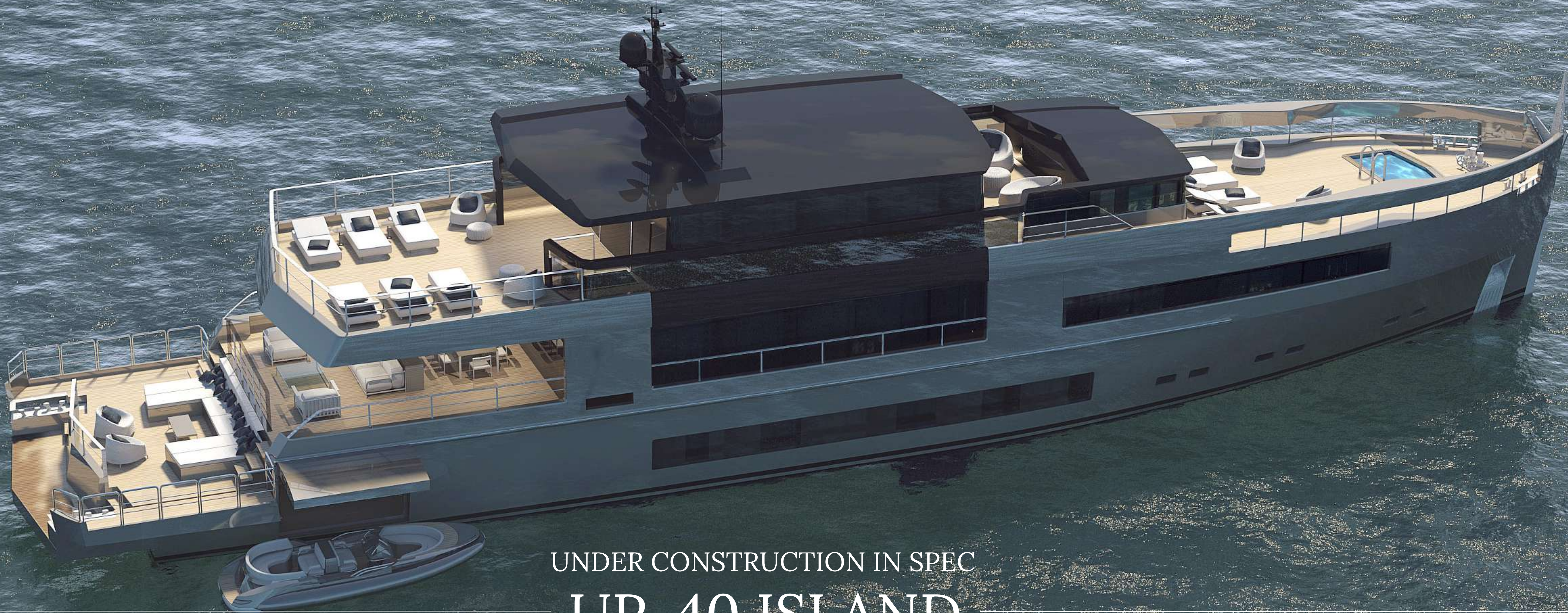


UP-40 ISLAND MAIN DECK





UNDER CONSTRUCTION IN SPEC
UP-40 ISLAND



UNDER CONSTRUCTION IN SPEC
UP-40 ISLAND



UNDER CONSTRUCTION IN SPEC
UP-40 ISLAND



UNDER CONSTRUCTION IN SPEC
UP-40 ISLAND



YACHTS

UP-40 PLATFORM



ANTONINI
N A V I

ANTONINI NAVI S.R.L.

Sede legale e stabilimento:

Località Pertusola - Frazione Muggiano - 19032 Lerici (LA SPEZIA) - ITALY

Ph +39 0187 1771300

info@antonininavi.com

www.antonininavi.com - www.gruppoantonini.it